

**Map E: Kaslo South  
Planning Area**

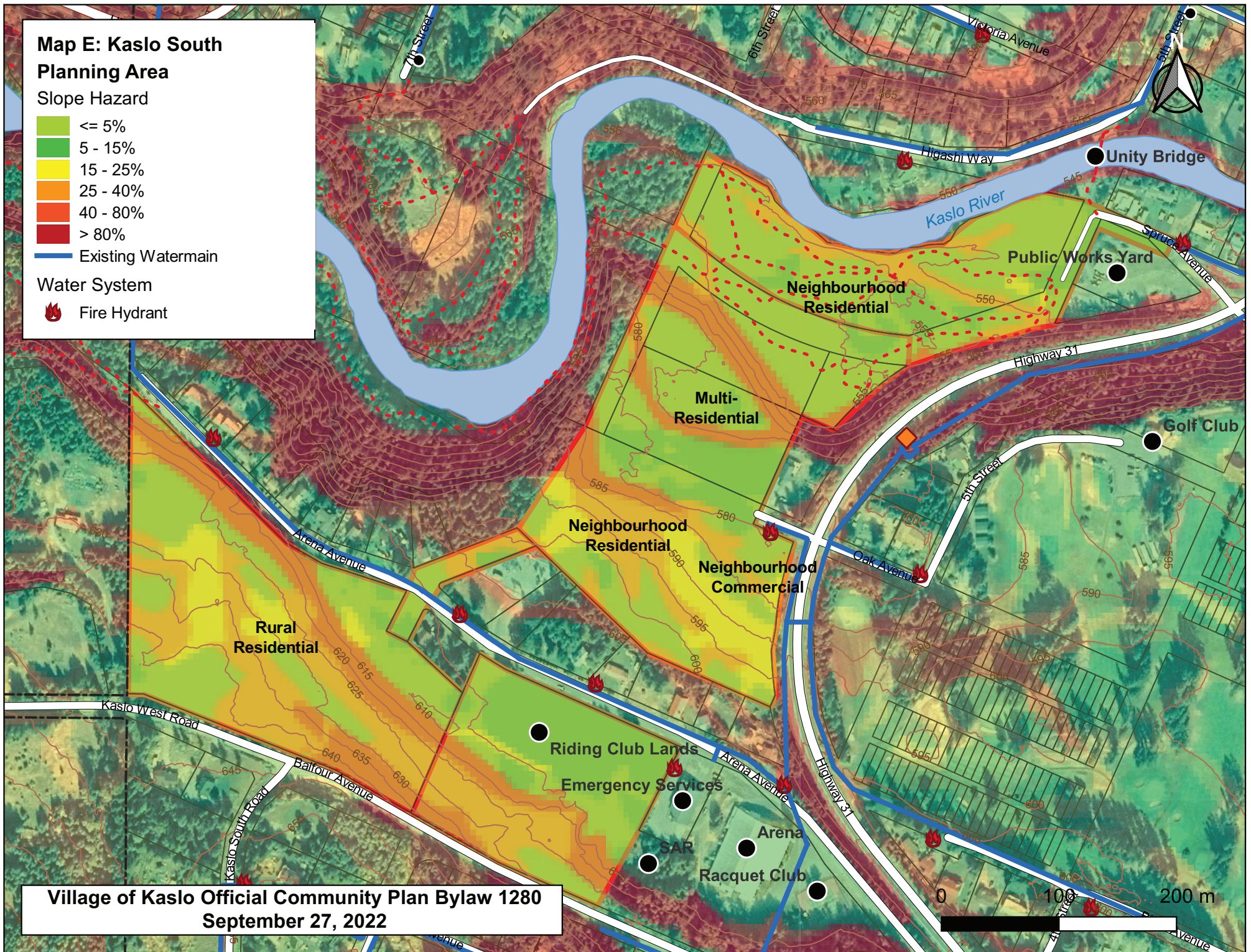
**Slope Hazard**

- <= 5%
- 5 - 15%
- 15 - 25%
- 25 - 40%
- 40 - 80%
- > 80%

Existing Watermain

**Water System**

Fire Hydrant



**Village of Kaslo Official Community Plan Bylaw 1280  
September 27, 2022**